

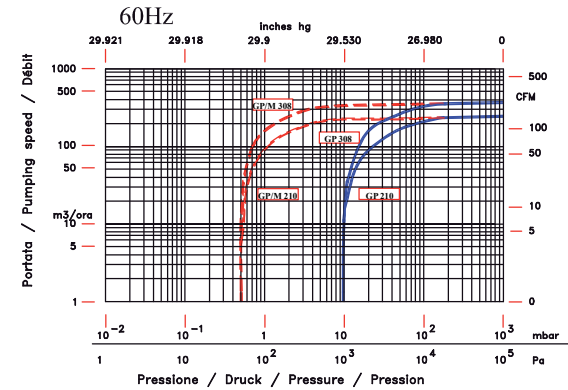
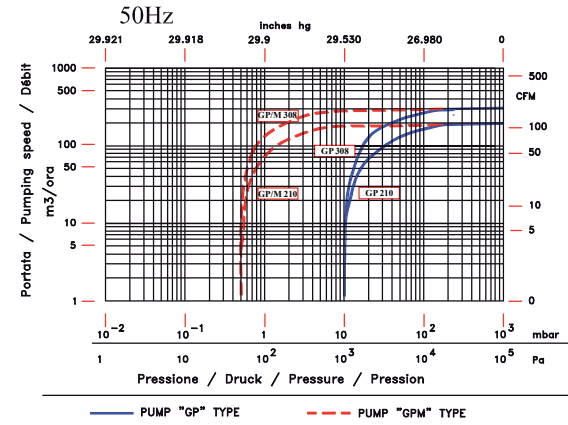
# Pompa tipo GP-GP/M 210-308

## Pump type GP-GP/M 210-308

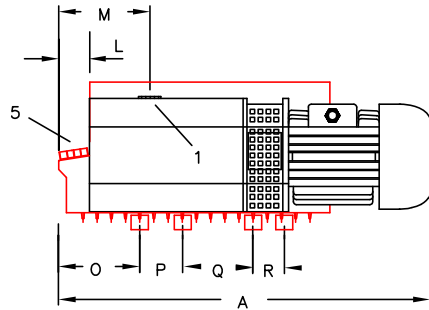


# Pompa tipo GP 210-308 ATEX

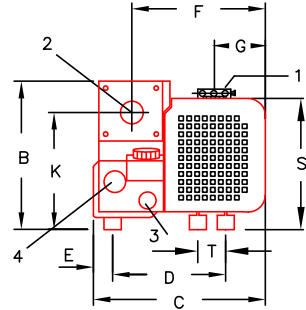
## Pump type GP 210-308 ATEX



- 1 ASPIRAZIONE
- 2 SCARICO
- 3 TAPPO SCARICO OLIO
- 4 SPIA LIVELLO OLIO
- 5 TAPPO CARICO OLIO



- 1 SUCTION
- 2 DISCHARGE
- 3 OIL DISCHARGE PLUG
- 4 OIL SIGHT GLASS
- 5 OIL FILL UP PLUG



|                                    |     | Tipo di pompa/Frequenza<br>Pump type/Frequency |               |                 |                 |               |               |                  |                 |
|------------------------------------|-----|--|---------------|-----------------|-----------------|---------------|---------------|------------------|-----------------|
|                                    |     | GP210<br>50Hz                                  | GP210<br>60Hz | GP/M210<br>50Hz | GP/M210<br>60Hz | GP308<br>50Hz | GP308<br>60Hz | GP/M308<br>50 Hz | GP/M308<br>60Hz |
| Dimensioni (mm)<br>Dimensions (mm) | A   | 900  | 900           | 900             | 900             | 1050          | 1050          | 1050             | 1050            |
|                                    | B   | 410  | 410           | 410             | 410             | 410           | 410           | 410              | 410             |
|                                    | C   | 555  | 555           | 555             | 555             | 555           | 555           | 555              | 555             |
|                                    | D   | 410  | 410           | 410             | 410             | 410           | 410           | 410              | 410             |
|                                    | E   | 48   | 48            | 48              | 48              | 48            | 48            | 48               | 48              |
|                                    | F   | 445  | 445           | 445             | 445             | 445           | 445           | 445              | 445             |
|                                    | G   | 160  | 160           | 160             | 160             | 160           | 160           | 160              | 160             |
|                                    | H   | 305  | 305           | 305             | 305             | 305           | 305           | 305              | 305             |
|                                    | L   | 55   | 55            | 55              | 55              | 55            | 55            | 55               | 55              |
|                                    | M   | 280  | 280           | 280             | 280             | 280           | 280           | 280              | 280             |
|                                    | O   | 167  | 167           | 167             | 167             | 167           | 167           | 167              | 167             |
|                                    | P   | 126  | 126           | 126             | 126             | 126           | 126           | 126              | 126             |
|                                    | Q   | 234  | 234           | 234             | 234             | 234           | 234           | 234              | 234             |
| R                                  | 41  | 41   | 41            | 41              | 91              | 91            | 91            | 91               |                 |
| S                                  | 365 | 365  | 365           | 365             | 365             | 365           | 365           | 365              |                 |
| T                                  | 73  | 73   | 73            | 73              | 73              | 73            | 73            | 73               |                 |

|  |   |        | Tipo di pompa/Frequenza<br>Pump type/Frequency |               |                 |                 |               |               |                  |                 |
|--|---|--------|--|---------------|-----------------|-----------------|---------------|---------------|------------------|-----------------|
|  |   |        | GP210<br>50Hz                                  | GP210<br>60Hz | GP/M210<br>50Hz | GP/M210<br>60Hz | GP308<br>50Hz | GP308<br>60Hz | GP/M308<br>50 Hz | GP/M308<br>60Hz |
| Portata nominale   | Displacement  | m³/h   | 200  | 240           | 200             | 240             | 300           | 360           | 300              | 360             |
| Vuoto finale   | Ultimate vacuum                                       | mbar   | 10   | 10            | 0,5             | 0,5             | 10            | 10            | 0,5              | 0,5             |
| Rumosità media senza zavorratore                           | Noise level without gas ballast                       | db (A) | 69   | 73            | 69              | 73              | 70            | 74            | 70               | 74              |
| Vuoto finale con zavorratore                               | Ultimate vacuum with gas ballast                      | mbar   | 14   | 14            | 1,5             | 1,5             | 14            | 14            | 1,5              | 1,5             |
| Quantità max di vapore d'acqua tollerabile con zavorratore | Max water vapour quantity acceptable with gas ballast | kg/h   | 5,4  | 7,4           | 5,4             | 7,4             | 5,7           | 8,5           | 5,7              | 8,5             |
| Tensione standard  | Standard voltage                                      | V      | 230/400  | 460           | 230/400         | 460             | 230/400       | 460           | 230/400          | 460             |
| Potenza motore   | Motor power   | kW     | 4  | 5,5           | 4               | 5,5             | 7,5           | 7,5           | 7,5              | 7,5             |
| Velocità di rotazione                                      | R.P.M.  | g/1'   | 1450   | 1750          | 1450            | 1750            | 1450          | 1750          | 1450             | 1750            |
| Peso con olio  | Weight with oil                                       | kg     | 160  | 160           | 160             | 160             | 200           | 200           | 200              | 200             |
| Quantità d'olio (min/max)                                  | Oil quantity (min/max)                                | l      | 4/7  | 4/7           | 4/7             | 4/7             | 4/7           | 4/7           | 4/7              | 4/7             |
| Attacco aspirazione  | Inlet connection                                      |        | 2" GAS   | 2" GAS        | 2" GAS          | 2" GAS          | 2" GAS        | 2" GAS        | 2" GAS           | 2" GAS          |
| Attacco scarico  | Outlet connection                                     |        | 2" GAS   | 2" GAS        | 2" GAS          | 2" GAS          | 2" GAS        | 2" GAS        | 2" GAS           | 2" GAS          |